



City of Beverly



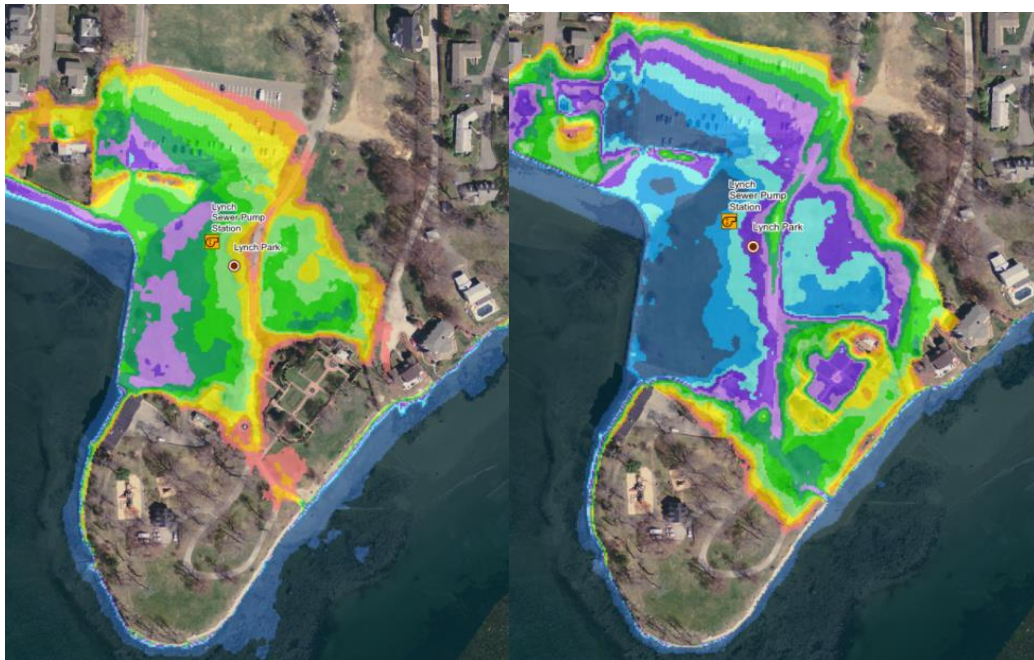
PLANNING AND DEVELOPMENT DEPARTMENT

Aaron Clausen

City of Beverly Director of Planning and Community Development

Lynch Park Carriage House
55 Obear Street
Beverly, Massachusetts 01915

The City of Beverly Planning and Engineering Departments will host a third (and final) community workshop on June 10th to introduce the public to the potential effects of climate change and sea level rise on the City of Beverly. Short presentations will be made on the ways that Beverly can become more resilient through planning, infrastructure enhancements, protecting green spaces and utilizing natural systems to protect the coastline and further community engagement. Activities to visual sea level rise will be showcased at Lynch Park. Additionally, local nonprofit organizations, such as Salem Sound Coastwatch, Mass Audubon and others will be available to educate everyone on ways to get involved locally to promote climate change awareness and resiliency projects throughout the region.



Map of Lynch Park Area – 2030
Projected Flood Depth due to
100-year Coastal Storm Event

Map of Lynch Park Area – 2070
Projected Flood Depth due to
100-year Coastal Storm Event

Please come to participate and learn about the potential impacts of our changing climate for the City of Beverly. The meeting will be held at the **Lynch Park Carriage House** on Saturday, **June 10th from 11 AM to 1 PM**. This is an all ages event!