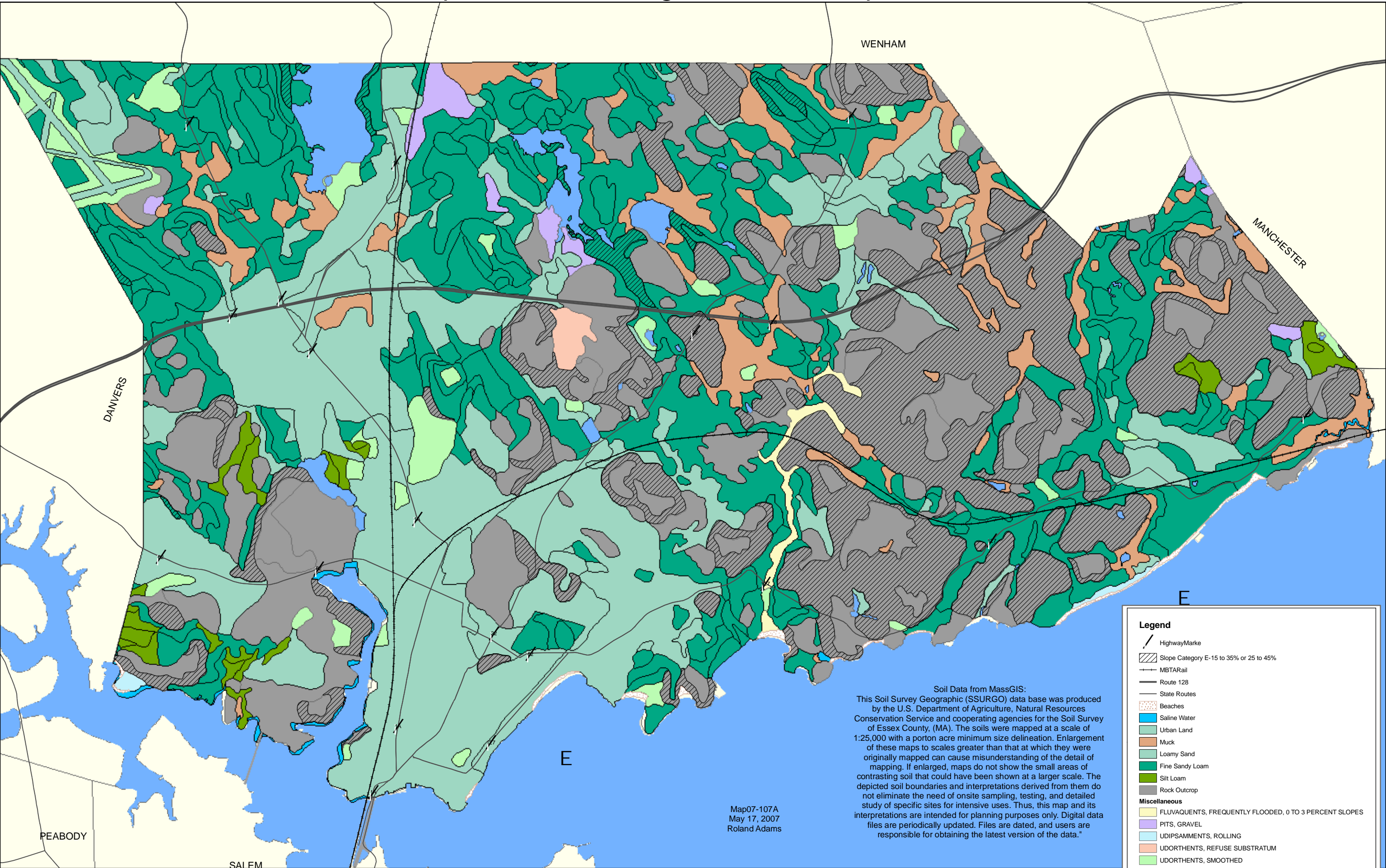


Map 2: Soil & Geologic Features Map



Soil Data from MassGIS:
 This Soil Survey Geographic (SSURGO) data base was produced by the U.S. Department of Agriculture, Natural Resources Conservation Service and cooperating agencies for the Soil Survey of Essex County, (MA). The soils were mapped at a scale of 1:25,000 with a portion acre minimum size delineation. Enlargement of these maps to scales greater than that at which they were originally mapped can cause misunderstanding of the detail of mapping. If enlarged, maps do not show the small areas of contrasting soil that could have been shown at a larger scale. The depicted soil boundaries and interpretations derived from them do not eliminate the need of onsite sampling, testing, and detailed study of specific sites for intensive uses. Thus, this map and its interpretations are intended for planning purposes only. Digital data files are periodically updated. Files are dated, and users are responsible for obtaining the latest version of the data."

Map07-107A
 May 17, 2007
 Roland Adams

Legend

- Highway/Mark
- Slope Category E-15 to 35% or 25 to 45%
- MBTA Rail
- Route 128
- State Routes
- Beaches
- Saline Water
- Urban Land
- Muck
- Loamy Sand
- Fine Sandy Loam
- Silt Loam
- Rock Outcrop
- Miscellaneous**
- FLUVAQUENTS, FREQUENTLY FLOODED, 0 TO 3 PERCENT SLOPES
- PITS, GRAVEL
- UDIPSAMMENTS, ROLLING
- UDORTHENTS, REFUSE SUBSTRATUM
- UDORTHENTS, SMOOTHED